

Our battery Type is **12V12AH** Sealed Lead Acid Battery for **one piece** battery. The original batteries are matched and safety tested with our chargers. If it is time for you to replace the batteries, we would recommend you to buy our original batteries. Of course, you can also buy the battery and charger from others. Please to buy certified batteries and chargers with UL certification. Our batteries for mobility scooter are packed inside a box, so if you need to replace the battery, please check the batteries size in case there is not enough room to store it.

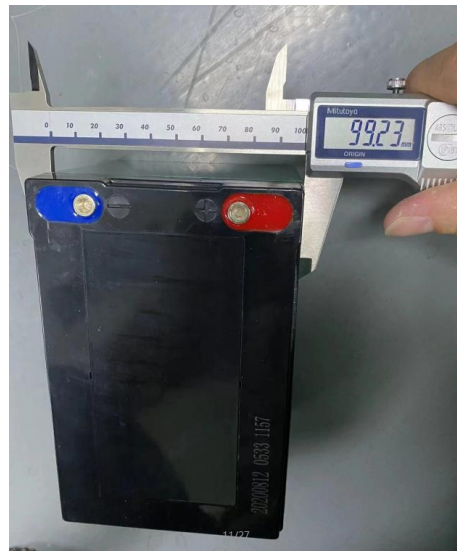
The battery size is:

Length: 151.45mm/5.96"

Width: 99.23mm/3.91"

Height: 97.93mm/3.86"

(The length and width are fixed, but the height can be varied since we have rubber mats on the batteries to fix it tightly)

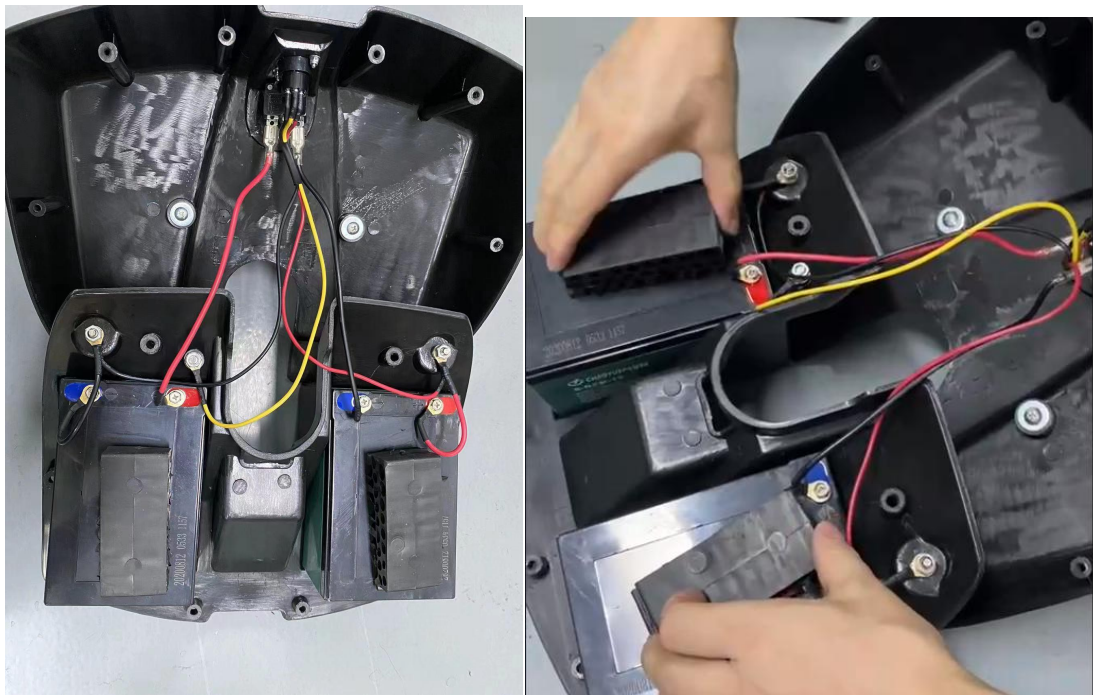


Process of Replacing Batteries Inside of the Battery Box

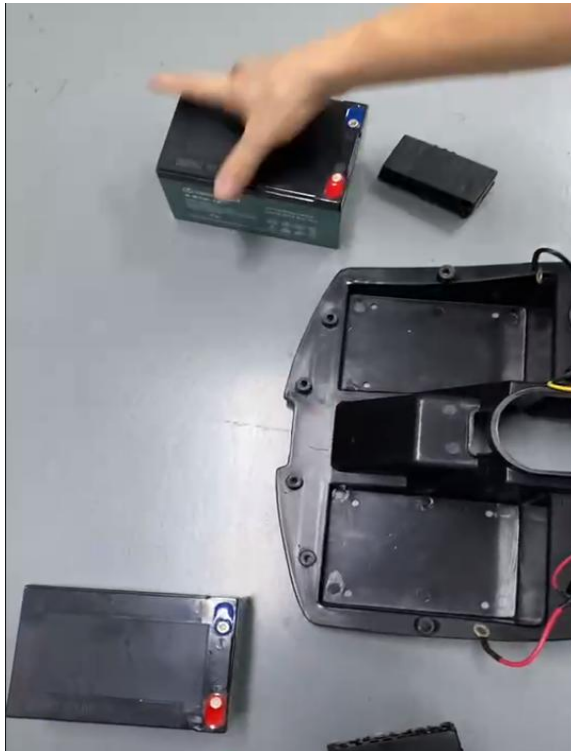
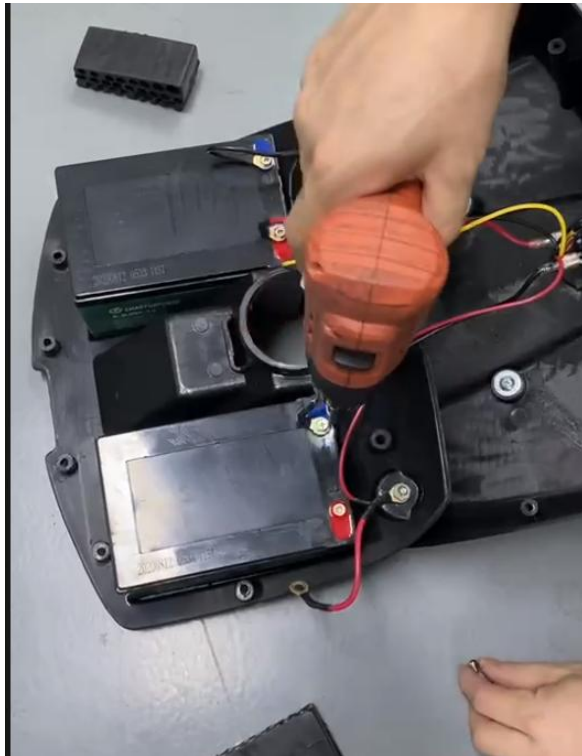
1. Unscrew those screws of the box, and turn it over to the upper side



2. You will see the cable connection, take off the rubber mat in the batteries.



3. Unscrew the nuts on the batteries, replacing new batteries, and connect again.



If you have any questions, please contact our after-sale:
emotorfactory@gmail.com